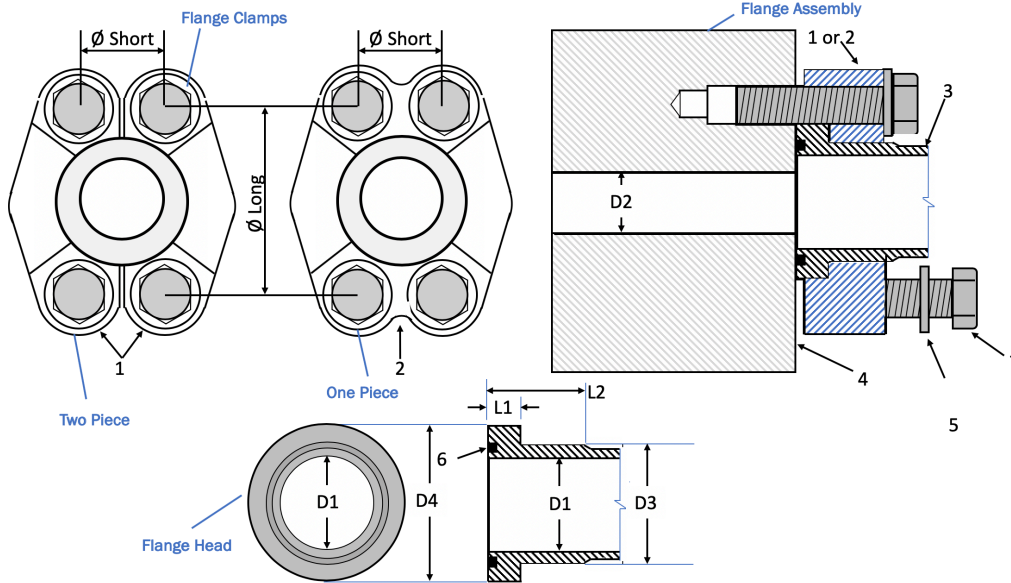


Code 61 (Split and One Piece Clamps)

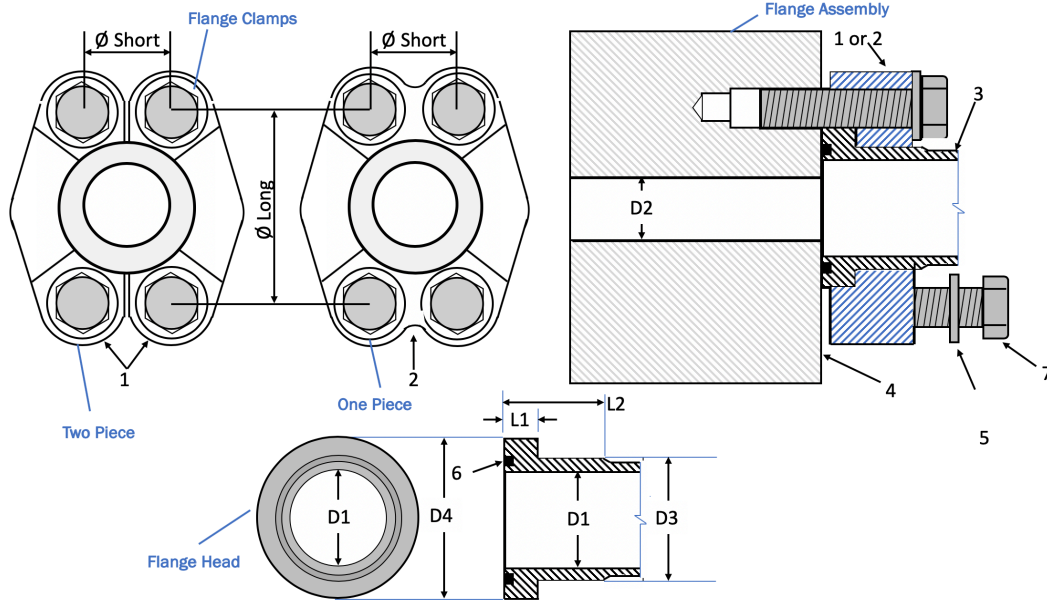


Nominal Size	1	2	3	4	5	D2		Maximum Working Pressure		Minimum Burst pressure		
						D2 must not be greater than D1		Mpa	psi	Mpa	psi	
						mm	in					
mm	in				Flat Washer							
13	0.50	Two-piece flange clamp	One-piece flange clamp	Flanged head	Mounting screw	M8	11.5 to 13.0	0.44 to 0.50	35	5,075	140	20,300
19	0.75					M10	17.7 to 19.2	0.69 to 0.75	35	5,075	140	20,300
25	1.00					M10	24.1 to 25.6	0.94 to 1.00	32	4,640	128	18,560
32	1.25					M10 ^C	30.0 to 31.0	1.19 to 1.25	28	4,060	112	16,240
38	1.50					M12	36.0 to 38.0	1.44 to 1.50	21	3,045	84	12,180
51	2.00					M12	49.0 to 51.0	1.94 to 2.00	21	3,045	84	12,180
64	2.50					M12	62.0 to 63.5	2.44 to 2.50	17.5	2,538	70	10,150
76	3.00					M16	74.7 to 76.2	2.94 to 3.00	16	2,320	64	9,280
89	3.50					M16	87.5 to 89.0	3.44 to 3.50	3.5	508	14	2,030
102	4.00					M16	100.1 to 101.6	3.94 to 4.00	3.5	508	14	2,030
127	5.00					M16	125.5 to 127.0	4.94 to 5.00	3.5	508	14	2,030

Nominal Size	O-ring code	D1		D3		D4		L1		L2		
		mm	in	mm	in	mm	in	mm	in	mm	in	
		mm	in									
13	0.50	210	12.70	0.50	23.9	0.941	30.2	1.189	6.8	0.268	13	0.512
19	0.75	214	19.05	0.75	31.8	1.252	38.1	1.500	6.8	0.268	14	0.551
25	1.00	219	25.40	1.00	38.1	1.500	44.45	1.750	8.0	0.315	14	0.551
32	1.25	222	31.75	1.25	43.2	1.701	50.8	2.000	8.0	0.315	14	0.551
38	1.50	225	38.10	1.50	50.3	1.980	60.35	2.376	8.0	0.315	16	0.630
51	2.00	228	50.80	2.00	62.2	2.449	71.4	2.811	9.6	0.378	16	0.630
64	2.50	232	63.50	2.50	74.2	2.921	84.1	3.311	9.6	0.378	18	0.709
76	3.00	237	76.20	3.00	90.2	3.551	101.6	4.000	9.6	0.378	19	0.748
89	3.50	241	88.90	3.50	101.6	4.000	114.3	4.500	11.3	0.445	22	0.866
102	4.00	245	101.60	4.00	114.3	4.500	127	5.000	11.3	0.445	25	0.984
127	5.00	253	127.00	5.00	139.7	5.500	152.4	6.000	11.3	0.445	28	1.102

Screw Thread	Screw Length	Screw Torque		Ø Long		Ø Short			
		Nm	ft-lb	mm	in	mm	in		
Metric	U.S.	mm	in	Nm	ft-lb	mm	in		
M8	5/16-18	32	1.25	32	24	38.1	1.500	17.5	0.688
M10	3/8-16	32	1.25	60	44	47.6	1.875	22.2	0.875
M10	3/8-16	32	1.25	60	44	52.4	2.062	26.2	1.031
M10	7/16-14	38	1.50	92	68	58.7	2.312	30.2	1.188
M12	1/2-13	38	1.50	150	111	69.9	2.750	35.7	1.406
M12	1/2-13	38	1.50	150	111	77.8	3.062	42.9	1.688
M12	1/2-13	44	1.75	150	111	88.9	3.500	50.8	2.000
M16	5/8-11	44	1.75	295	218	106.4	4.188	61.9	2.438
M16	5/8-11	51	2.00	295	218	120.7	4.750	69.9	2.750
M16	5/8-11	51	2.00	295	218	54.0	2.125	77.8	3.062
M16	5/8-11	57	2.25	295	218	152.4	6.000	92.1	3.625

Code 62 (Split and One Piece Clamps)



Nominal Size	1	2	3	4	5	D2		Maximum Working Pressure		Minimum Burst Pressure		
						D2 must not be greater than D1		Mpa	psi	Mpa	psi	
						mm	in					
13	0.50	Two-piece flange clamp	One-piece flange clamp	Flanged head	Mounting flange	M8	12 to 13.0	0.44 to 0.50	42	6,090	168	24,360
19	0.75					M10	17.7 to 19.2	0.69 to 0.75	42	6,090	168	24,360
25	1.00					M10	24.1 to 25.6	0.94 to 1.00	42	6,090	168	24,360
32	1.25					M10	30.5 to 32.0	1.19 to 1.25	42	6,090	168	24,360
38	1.50					M11	36.1 to 38.1	1.44 to 1.50	42	6,090	168	24,360
51	2.00					M12	49.5 to 51.0	1.94 to 2.00	42	6,090	168	24,360
64	2.50					M12	62.0 to 63.5	2.44 to 2.50	42	6,090	168	24,360
76	3.00					M16	74.7 to 76.2	2.94 to 3.00	42	6,090	168	24,360

Nominal Size		O-ring code	D1		D3		D4		L1		L2	
mm	in		mm	in	mm	in	mm	in	mm	in	mm	in
13	0.50	210	13.0	0.50	23.9	0.941	31.75	1.250	7.8	0.307	14	0.551
19	0.75	214	19.2	0.75	31.8	1.252	41.30	1.626	8.8	0.346	18	0.709
25	1.00	219	25.6	1.00	38.1	1.500	47.65	1.876	9.5	0.374	21	0.827
32	1.25	222	32.0	1.25	43.7	1.720	54.00	2.126	10.3	0.406	25	0.984
38	1.50	225	38.2	1.50	50.8	2.000	63.50	2.500	12.6	0.496	30	1.181
51	2.00	228	51.0	2.00	66.5	2.618	79.40	3.126	12.6	0.496	38	1.496
64	2.50	232	63.5	2.50	89.0	3.504	107.70	4.240	20.5	0.807	50	1.969
76	3.00	237	76.2	3.00	113.5	4.469	131.70	5.185	26.0	1.024	65	2.559

Screw Thread		Screw Length		Screw Torque		Ø Long		Ø Short	
Metric	U.S.	mm	in	Nm	ft-lb	mm	in	mm	in
M8	5/16-18	30	1.50	32	24	40.5	1.594	18.2	0.718
M10	3/8-16	35	1.50	70	52	50.8	2.000	23.8	0.937
M12	7/16-14	45	1.75	130	96	52.4	2.062	27.8	1.093
M12	1/2-13	45	2.25	130	96	66.7	2.625	31.8	1.250
M16	5/8-11	55	2.25	295	218	79.4	3.125	36.5	1.437
M20	3/4-10	70	3.00	550	407	96.8	3.812	44.5	1.750
M24	7/8-9	80	3.50	550	407	123.8	4.875	58.7	2.312
M30	1 1/8-7	80	4.50	650	481	152.4	6.000	71.4	2.812

For more detailed information, refer to ISO 6162-2